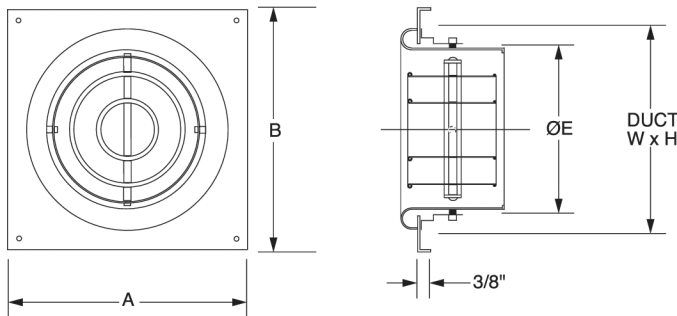


Model: NT-P

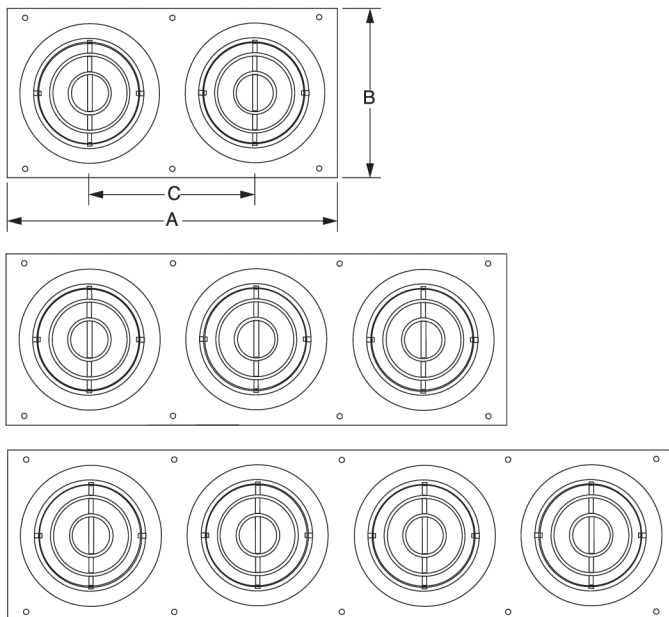
TurboNozzle Panel

- Mounting Screw Fastening System
- Individually Adjustable TurboNozzles
- Up to 4 Diffusers per Panel

- Material
 - TurboNozzle-Aluminum
 - Plate-Heavy Gauge Steel
- Standard Finish
 - TurboNozzle- Anodized or White
 - Plate-Brushed or White



MODEL	DUCT SIZE		A	B	ØE
	SQUARE W x H	ROUND (Ø) INCHES			
NT 4P	150X150	150	191	191	102
NT 6P	200X200	200	241	241	152
NT 8P	250X250	250	305	305	203
NT 10P	300X300	300	356	356	254
NT 12P	350X350	350	432	432	305
NT 14P	400X400	400	483	483	356
NT 16P	450X450	450	533	533	406



MODEL	DUCT SIZE W x H	NT SIZE X QTY.	A	B	C
NT 4-2P	343x150	NT 4 X 2	381	191	191
NT 4-3P	533x150	NT 4 X 3	572	191	191
NT 4-4P	724x150	NT 4 X 4	762	191	191
NT 6-2P	445x200	NT 6 X 2	483	241	241
NT 6-3P	686x200	NT 6 X 3	724	241	241
NT 6-4P	927x200	NT 6 X 4	965	241	241
NT 8-2P	559x250	NT 8 X 2	610	305	305
NT 8-3P	864x250	NT 8 X 3	914	305	305
NT 8-4P	1168x250	NT 8 X 4	1219	305	305
NT10-2P	660x300	NT10 X 2	711	356	356
NT10-3P	1016x300	NT10 X 3	1067	356	356
NT10-4P	1372x300	NT10 X 4	1422	356	356
NT12-2P	787x350	NT12 X 2	864	432	432
NT12-3P	1219x350	NT12 X 3	1295	432	432
NT12-4P	1651x350	NT12 X 4	1727	432	432
NT14-2P	889x400	NT14 X 2	965	483	483
NT14-3P	1372x400	NT14 X 3	1448	483	483
NT14-4P	1854x400	NT14 X 4	1930	483	483
NT16-2P	991x450	NT16 X 2	1067	533	533
NT16-3P	1524x450	NT16 X 3	1600	533	533
NT16-4P	2057x450	NT16 X 4	2134	533	533

Dimensions are in millimeters. Product Information is Subject to Change Without Notice

JOB NAME: _____
 LOCATION: _____
 ARCHITECT: _____
 ENGINEER: _____
 CONTRACTOR: _____

SUBMITTED BY: _____

DATE: _____

Model NT-P
 TurboNozzle Panel

Form No.734N-M-b