

Dryer Vents

Model: **SFZ & SFZC**



Model: **SFZ**



Model: **SFZC**
(with Backdraft Damper)



MATERIAL

- Aluminum

FINISH

- Clear Anodized
- Custom Colors Available

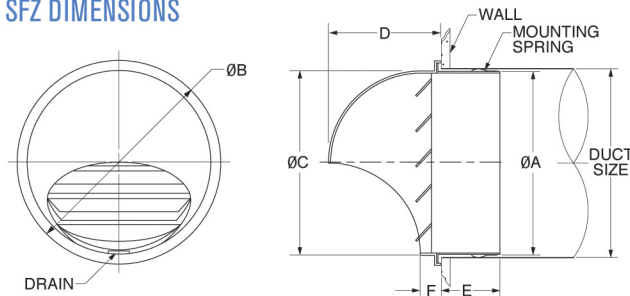
Exceptionally designed for exterior applications, the SFZ and the SFZC are easy to install and have large openings to reduce clogging. SFZ is suited to exhaust fan applications such as dryer, bathroom, or kitchen exhaust venting. The heavy-gauge anodized aluminum construction is corrosion-resistant for durability.

Note: No louver manufacturer warrants their louver to prevent water penetration under all possible circumstances of wind and rain.

FEATURES

- With Back-Draft Damper (SFZC)
- Anodized Finish for Corrosion Protection
- Made from Machined Anodized Aluminum
- Available for Standard Duct Sizes in 4" and 6" Round
- Large Free Area Reduces Clogging
- Economical
- Water Condensation Drain
- Designed for Weather Resistance

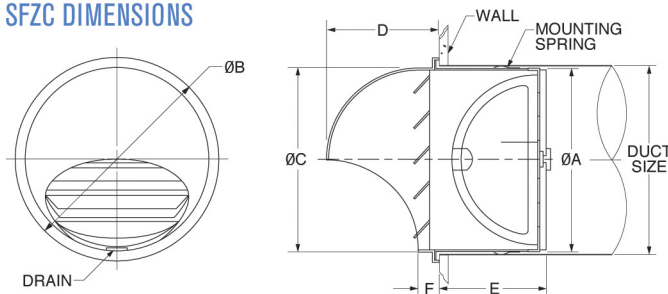
MODEL SFZ DIMENSIONS



MODEL	DUCT SIZE	A	B	C	D	E	F	FREE AREA
SFZ 4	4	3 19/16	4 3/4	3 25/32	2 11/16	1 9/16	9/16	0.04 sq.ft.
SFZ 6	6	5 23/32	6 29/32	5 29/32	3 15/16	2 9/16	3/4	0.11 sq.ft.

Product information is subject to change without notice. All dimensions in inches.

MODEL SFZC DIMENSIONS



MODEL	DUCT SIZE	A	B	C	D	E	F	FREE AREA
SFZC 4	4	3 19/16	4 3/4	3 25/32	2 11/16	2 5/32	9/16	0.04 sq.ft.
SFZC 6	6	5 23/32	6 29/32	5 29/32	3 15/16	3 3/4	3/4	0.11 sq.ft.

Product information is subject to change without notice. All dimensions in inches.

