

Aluminum Reversible TurboNozzle

Model: **NX**



Model: **NX**

MATERIAL

- Aluminum

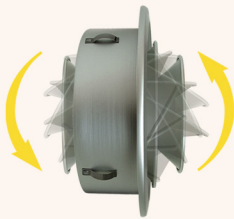
FINISH

- Clear Anodized
- Custom Colors Available

Seiho is pleased to announce the addition of the Aluminum Reversible TurboNozzle, model NX, to its popular TurboNozzle lineup. The versatile Model NX utilizes a distinctive cone design - by rotating the inner cones, it provides the effective selection of narrow or wide jet air pattern as well as adjustment of direction. The aluminum and stainless steel design contribute to the NX's light weight so much so that it is easily installed and held in place by strong spring clips. No unsightly screws are necessary!*

*Note: The model NX is designed for wall mounting. Screws must be used for ceiling mounting.

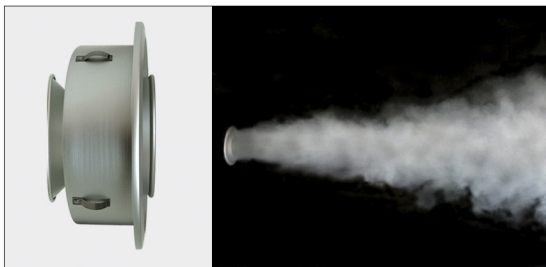
FEATURES



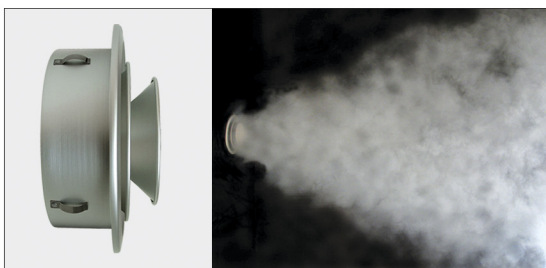
- Reversible Center Cones for Narrow or Wide Jet Air Pattern
- Infinitely Adjustable 2-Axis Core for Directional Control
- Long Throw Capability
- Anodized Aluminum Body and Stainless Steel Construction
- Available for Standard Duct Sizes
- Horizontal Throw
- Concealed, Spring Clip, Fastening Mechanism



AIRFLOW SMOKE PATTERNS

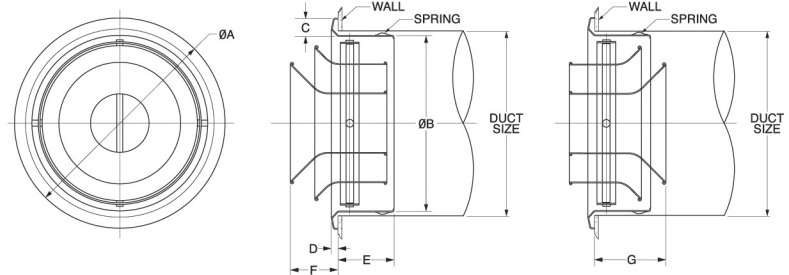


■ Straight Pattern



■ Diffusing Pattern

MODEL NX DIMENSIONS



MODEL	DUCT SIZE	A	B	C	D	E	F	G
NX 6	6	7 13/32	5 17/32	1	3/8	2 1/2	1 1/8	2 1/2
NX 8	8	9 13/32	7 1/2	1	3/8	2 1/2	1 13/16	3 1/16
NX10	10	11 3/8	9 15/32	1	3/8	3	2 9/16	3 13/16
NX12	12	13 11/32	11 15/32	1	3/8	3	3 3/16	4 7/16
NX14	14	15 5/16	13 7/16	1	3/8	4	3 25/32	5 1/32
NX16	16	17 9/32	15 13/32	1	3/8	4	4 11/32	5 19/32

Product information is subject to change without notice. All dimensions in inches.

