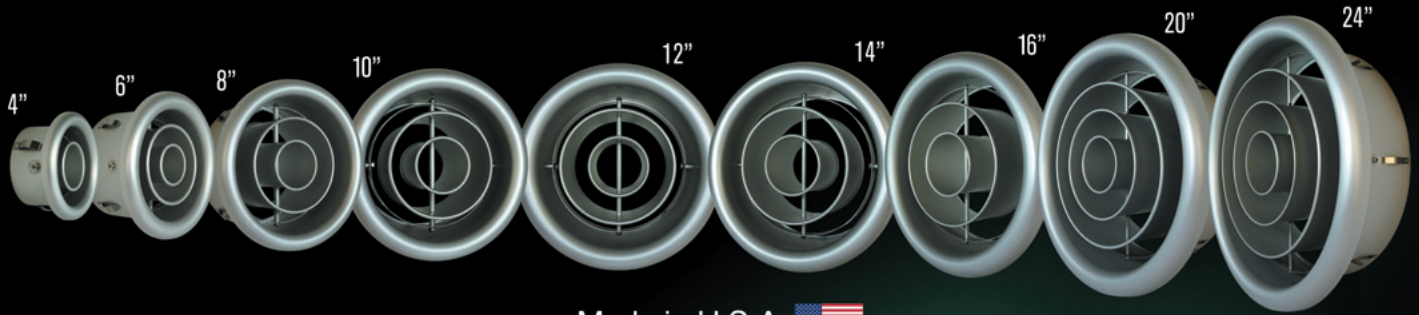

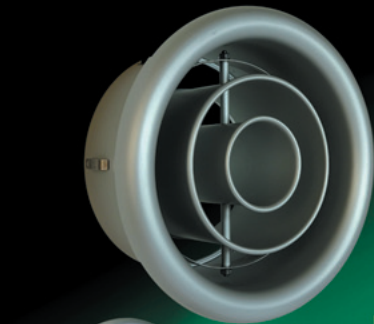


# Aluminum TurboNozzle Series



Made in U.S.A. 

*Stylish anodized aluminum finish with exceptionally high quality construction*



Model: **NT**



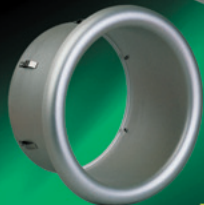
Natural History Museum Los Angeles, CA



Model: **NTX-R**  
(Exposed Duct Mounted)



Model: **NTX**  
(Surface Mounted)



Model: **NP**

- Airport Concourses
- Shopping Centres
- Sports Facilities
- Convention Centres
- Factories
- Retail Stores



Model: **NT-P**  
(TurboNozzle Panel)



Model: **BS**  
(Butterfly Damper)

## Reversible TurboNozzle



Model: **NX**

6" - 16"

- Reversible Center Cones for Narrow or Wide Jet Air Pattern
- Adjustable Air Direction
- High Airflow Capacity



Diffusing Pattern



Straight Pattern

► If you are interested in becoming an authorized international distributor, please contact us. (Except the United States/Canada/Mexico/Japan)



**SEIHO** | [seiho.com](http://seiho.com)

 We Ship Worldwide



Seiho International, Inc. 120 W. Colorado Blvd. Pasadena, CA 91105 Tel: (626) 395-7299 Fax: (626) 395-7290 info@seiho.com