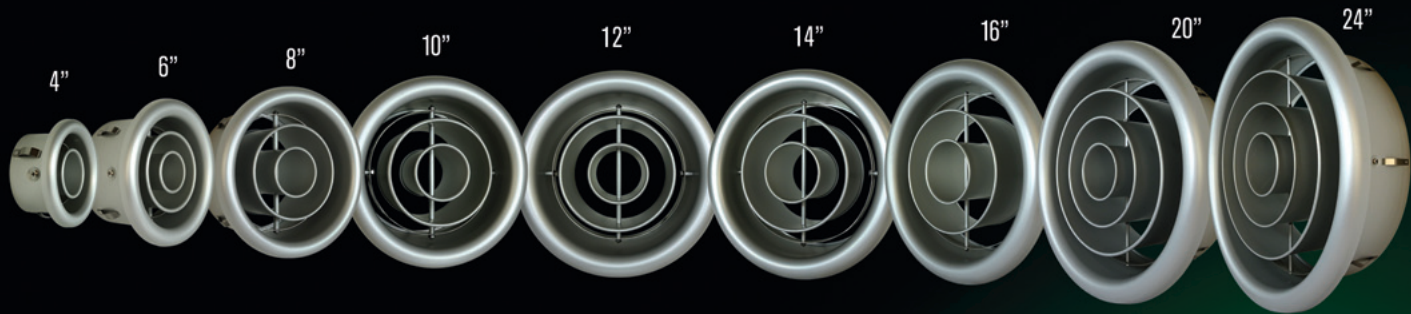
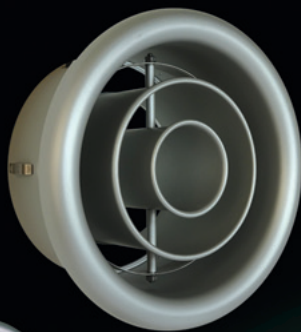


Aluminum TurboNozzle Series

 Made in U.S.A.



Stylish anodized aluminum finish with exceptionally high quality construction



Model: **NT**



Natural History Museum Los Angeles, CA



Model: **NTX-R**
(Exposed Duct Mounted)

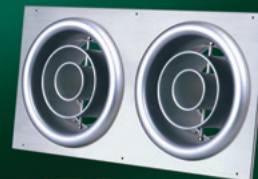


Model: **NTX**
(Surface Mounted)



Model: **NP**

- Airport Concourses
- Shopping Centres
- Sports Facilities
- Convention Centres
- Factories
- Retail Stores



Model: **NT-P**
(TurboNozzle Panel)



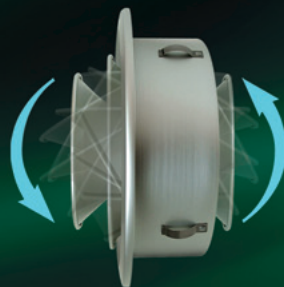
Model: **BS**
(Butterfly Damper)

Reversible TurboNozzle



Model: **NX**

- Reversible Center Cones for Narrow or Wide Jet Air Pattern
- Adjustable Air Direction
- High Airflow Capacity



6" - 16"



■ Diffusing Pattern



■ Straight Pattern

▶ If you are interested in becoming an authorized international distributor, please contact us. (Except the United States/Canada/Mexico/Japan)



SEIHO | seiho.com

 We Ship Worldwide



Seiho International, Inc. 120 W. Colorado Blvd. Pasadena, CA 91105 Tel: (626) 395-7299 Fax: (626) 395-7290 info@seiho.com