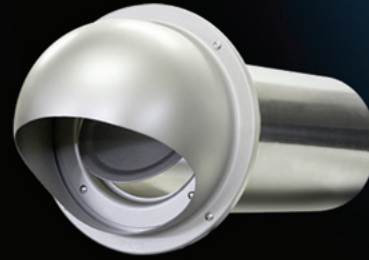


# Dryer Vents



Model: **SB-P**  
4" & 6" Aluminum



Model: **SFB-P**  
4" & 6" Aluminum



Model **SFZC**  
4" & 6" Aluminum



Model **RCC-S**  
4" & 6" Stainless Steel

# Vent Caps



Model **SX**  
3" - 8" Aluminum



Model **KX**  
3" - 6" Aluminum



Model **SFX-S**  
4" & 6" Stainless Steel



Model **SXL**  
10" - 16" Aluminum



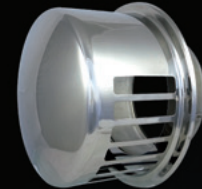
Model **SFZ**  
4" & 6" Aluminum



Model **SFX**  
3" - 12" Aluminum



Model **SX-S**  
4" & 6" Stainless Steel



Model **RCA-S**  
4" & 6" Stainless Steel

# Fresh Air Grilles



Model **JRC**  
4" & 6" Aluminum



Model **JRA**  
4" & 6" ABS Resin



Model **DK-M8**  
3", 4", 6" ABS Resin



Model **JSP**  
4" & 6" ABS Resin

