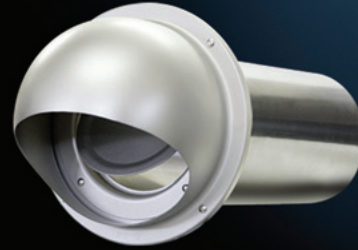


Dryer Vents



Model: **SB-P**
4" & 6" Aluminum



Model: **SFB-P**
4" & 6" Aluminum



Model **SFZC**
4" & 6" Aluminum



Model **RCC-S**
4" & 6" Stainless Steel

Vent Caps



Model **SX**
3"-8" Aluminum



Model **KX**
3"-6" Aluminum



Model **SFX-S**
4" & 6" Stainless Steel



Model **SXL**
10"-16" Aluminum



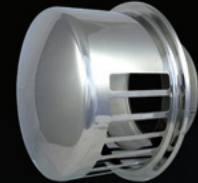
Model **SFZ**
4" & 6" Aluminum



Model **SFX**
3"-12" Aluminum



Model **SX-S**
4" & 6" Stainless Steel



Model **RCA-S**
4" & 6" Stainless Steel

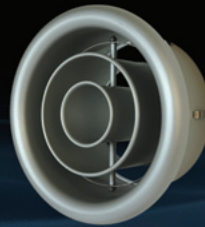
Diffusers



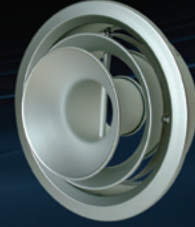
Model **PK**
SpotDiffuser
3"- 20" Aluminum



Model **RHV**
Round Grille
6"- 24" Aluminum



Model **NT**
TurboNozzle
4"- 24" Aluminum



Model **NX**
Reversible TurboNozzle
6"- 16" Aluminum

► If you are interested in becoming an authorized international distributor, please contact us. (Except the United States/Canada/Mexico/Japan)

