

Volume Adjustable Grilles

Model: **JSP**

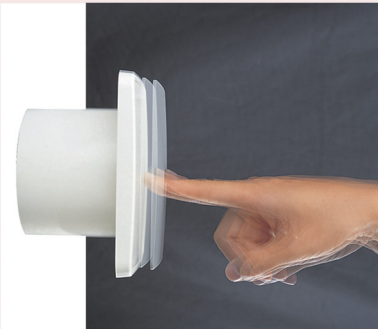


MATERIAL	FINISH
• ABS Resin	• White

Model: **JSP**

New!

The versatile JSP Adjustable Plastic Grille features a square plate that can be pressed in for adjusting the airflow at four different positions: three levels in the open position and the closed position. The JSP offers excellent architectural styling for low flow supply and exhaust applications. Designed for ceiling and wall mounting, it provides an integral, readily-accessible airflow adjustment in its installed position. The high density plastic construction is virtually corrosion-proof and is ideal for use in high humidity indoor installations, such as bathrooms, showers, and dish washing areas.



FEATURES

- Adjustable Volume Control by Pressing Face Plate
- Contemporary Design Goes with All Decors
- Low Silhouette, Unobtrusive Profile
- Concealed, Spring Clip, Fastening Mechanism
- Available for Standard Duct Sizes
- Wall or Ceiling Mountable

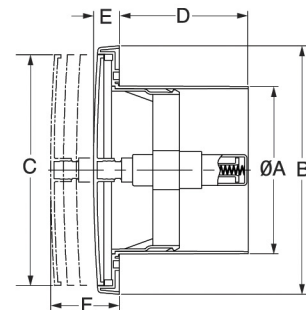
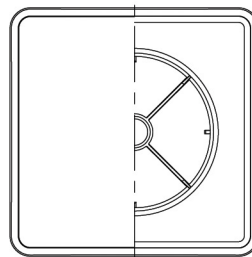
APPLICATIONS

- Fresh Air Intake
- Ventilation for Interior and Exterior Locations
- Residential, Commercial, and Marine Applications
- For Use With Ducted and Unducted Systems
- Bathroom Exhaust & Supply Applications



- Removable core for easy installation and maintenance

MODEL JSP DIMENSIONS



MODEL	DUCT SIZE	A	B	C	D	E	F
JSP 4	4	3 3/4	5 23/32	5 9/32	2 3/4	19/32	1 1/2 : 1 1/4 : 31/32
JSP 6	6	5 13/16	7 11/16	7 3/16	2 3/4	21/32	1 3/4 : 1 1/4 : 1

Product information is subject to change without notice. All dimensions in inches.

Volume Adjustable Grilles

Model: **JRC/JRA/DK-M3/DK-M**

Seiho's Volume Adjustable Grilles offers excellent architectural styling for low flow supply and exhaust applications. Designed for ceiling and wall mounting, they provides a readily-accessible air flow adjustment. The high density plastic (JRA, DK-M, DK-M3) and anodized aluminum (JRC) construction are virtually corrosion-proof and is ideal for use in high humidity indoor installations, such as bathrooms, showers, and dish washing areas.

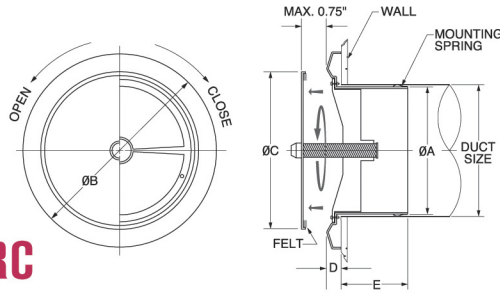
FEATURES

- Contemporary Design Goes with All Decors
- Low Silhouette, Unobtrusive Profile
- Wall or Ceiling Mountable*
- Infinite Adjustable Core for Volume Control
- Positive Sealing Core-to-Body Mount
- 360° Diffusion Air Pattern
- Concealed, Spring Clip, Fastening Mechanism
- Available for Standard Duct Sizes in 4" and 6" Round

*Note: Recommended use of (3) No.8 screws through body into duct wall to ensure positive connection in ceiling application



Model: **JRC**



MATERIAL FINISH

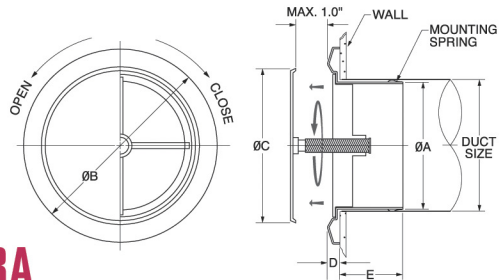
- Aluminum
- Clear Anodized
- Custom Colors Available

MODEL	DUCT SIZE	A	B	C	D	E
JRC 4	4	3 3/4	6 5/16	5 1/8	19/32	2 3/16
JRC 6	6	5 11/16	8 3/4	7 5/16	19/32	2 3/8

Product information is subject to change without notice. All dimensions in inches.



Model: **JRA**



MATERIAL FINISH

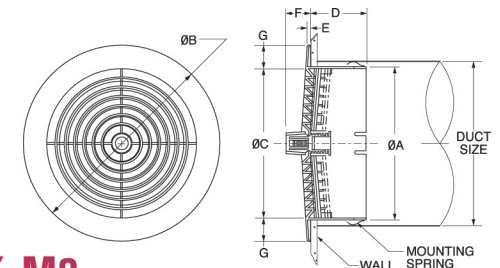
- ABS Resin
- White

MODEL	DUCT SIZE	A	B	C	D	E
JRA 4	4	3 25/32	5 29/32	5 11/32	1/2	1 31/32
JRA 6	6	5 22/32	7 7/8	6 7/32	1/2	1 31/32

Product information is subject to change without notice. All dimensions in inches.



Model: **DK-M3**
(with Slide Damper)



MATERIAL FINISH

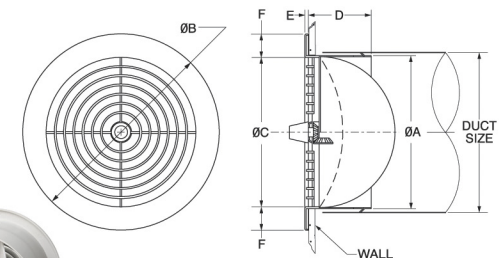
- ABS Resin
- White

MODEL	DUCT SIZE	A	B	C	D	E	F	G	FREE AREA
DK 3M3	3	2 29/32	4 1/4	3 1/8	1 15/16	3/16	9/16	9/16	0.02sq.ft.
DK 4M3	4	3 7/8	5 1/8	4	1 15/16	3/16	1/2	9/16	0.04sq.ft.
DK 6M3	6	5 7/8	7 1/16	5 15/16	1 15/16	3/16	9/16	9/16	0.08sq.ft.

Product information is subject to change without notice. All dimensions in inches.



Model: **DK-M**
(with Butterfly Damper)



MATERIAL FINISH

- ABS Resin
- White

MODEL	DUCT SIZE	A	B	C	D	E	F	FREE AREA
DK 3M	3	2 29/32	3 29/32	2 23/32	1 9/16	3/16	5/8	0.02sq.ft.
DK 4M	4	3 29/32	5 3/32	3 21/32	2 1/8	3/16	23/32	0.04sq.ft.
DK 6M	6	5 13/16	7 1/16	5 11/32	2 1/8	3/16	27/32	0.10sq.ft.

Product information is subject to change without notice. All dimensions in inches.